

# What is Moviprep

Each box contains 2 sealed plastic bags where each bag contains sachets A & B (1 dose).

## Why do I need to take it?

Taking Moviprep before your appointment will give you a clean bowel.

## What to Expect

After you drink Moviprep you will have lots of watery bowel movements, so stay near a toilet because you may need to use it urgently.



## Reporting of Side Effects

### United Kingdom

If you get any side effects, talk to your doctor, pharmacist or nurse. This includes any possible side effects not listed in the package leaflet. You can also report side effects directly via the Yellow Card Scheme at [www.mhra.gov.uk/yellowcard](http://www.mhra.gov.uk/yellowcard). By reporting side effects you can help provide more information on the safety of this medicine.

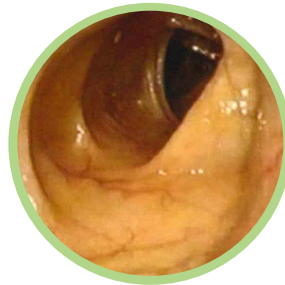
### Ireland

If you get any side effects, talk to your doctor, pharmacist or nurse. This includes any possible side effects not listed in the package leaflet. You can also report side effects directly to the HPRRA, via [www.hpra.ie](http://www.hpra.ie) or by calling (01) 676 4971. By reporting side effects you can help provide more information on the safety of this medicine.

A patient support item from Norgine.  
Norgine Pharmaceuticals Limited, Moorhall Road, Harefield, Middlesex UB9 6NS.

E-mail: [os-medinfo@norgine.com](mailto:os-medinfo@norgine.com).  
Tel: +44 (0) 1895 826 606.

# Importance of Proper Cleansing

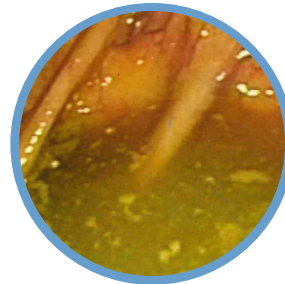


A clean bowel will allow for a clear view of its inner lining which is important for both accurate diagnosis and treatment.

Abnormal changes may be tiny, so even the smallest amount of faeces could potentially disguise something important.



If the bowel is not empty and clean enough, the procedure may have to be cancelled and repeated on another occasion at a later date.



# Hints & Tips Patient Advice

It's strongly advised that **you drink an extra 500ml of clear fluids with each dose**. Continue drinking clear fluids to keep yourself hydrated until 2 hours before your procedure and then stop drinking, which may include:



Water



Clear soups  
(no bits)



Tea & Coffee  
(without milk)



Soft drinks  
(cordial - not blackcurrant)

..... **Do Not Drink Alcohol** .....

Moviprep may be easier to take when:

- Drinking through a straw
- Adding cordial (to alter the flavour, but not blackcurrant as it will stain the bowel)
- It has been chilled once it has been made up

Further advice for patients:

- Using wet wipes after each bowel movement
- Use a barrier cream to prevent a 'sore bottom' for example: petroleum jelly

# How to Prepare Moviprep

Please Repeat This for the Second Dose



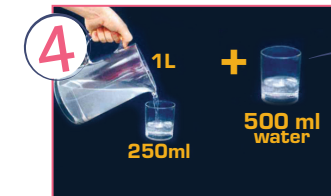
1 Empty 1 dose of sachet A & B into a jug



2 Add 1 litre of water (not chilled)



3 Stir until dissolved (clear or slightly hazy)



4 Every 15-30 minutes drink one glassful (250ml) until finished (over 1-2 hours)



# When to Take Your Moviprep

## Day Before Dosing



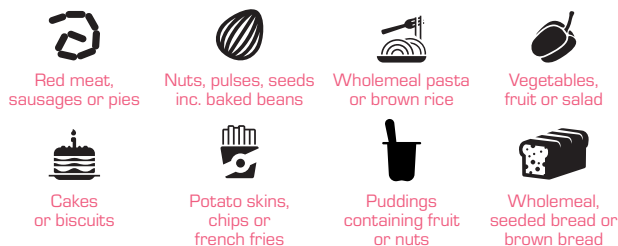
## Dietary Advice

For specialised diets, please refer to your healthcare professional

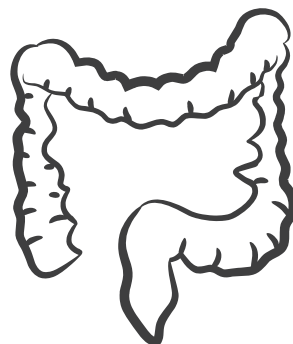
### ••••• Low Fibre Foods Which Are Preferred •••••



### ••••• High Fibre Foods Which Should Be Avoided •••••



## What is a Colonoscopy



A colonoscopy is a test that uses a narrow, flexible, telescopic camera called a colonoscope to look at the lining of your large bowel. A colonoscopy can be used to detect irritated and swollen tissue, ulcers, or growths such as polyps. It helps to diagnose or exclude health conditions like Crohn's disease, ulcerative colitis, diverticular disease and bowel cancer.

# Hints & Advice on Taking Moviprep



## Morning Appointment

Dosing timeline code: UKE-COR-PR-2200020  
 Date of preparation: July 2022  
 What is a Colonoscopy Code : UKE-COR-PR-2200017  
 Date of preparation: July 2022  
 Code: UKE-COR-PR-2200028  
 Date of preparation: October 2022

